

## Dongfeng 22 Meters High Altitude Operation Truck

### Technical Specification:

Item	Unit	Specification
Product name		Dongfeng Tianjin high-altitude truck
Chassis model		DFL1120B13
Gross weight	kg	11050
Curb weight		10855
Overall dimension		10100×2500×3800
wheelbase	mm	4700
Approach/departure angle	°	20 / 10
Engine model		ISB180 40
Engine manufacturer		Dongfeng Cummins Engine Co. ,Ltd
Emission standard		Euro IV
Displacement / Power	ml/kw	5900/ 132
Tire specification / Number	pcs	9.00-20
Max speed	km/h	90
Max working height	m	20 / 22
Rated platform load	kg	200
Rated manned platform	man	2
Slewing angle□Left□Right□	°	360
Outrigger type / Q'ty	pcs	H-type, 4 pcs
Remark		The whole truck is operated through upper and lower hydraulic operation, equipped with hook.

### Product Image









Whatsapp & Telephone: +86-18607222773 Email: [brenda@clwtruck.com](mailto:brenda@clwtruck.com)



Whatsapp & Telephone: +86-18607222773 Email: [brenda@clclwtruck.com](mailto:brenda@clclwtruck.com)



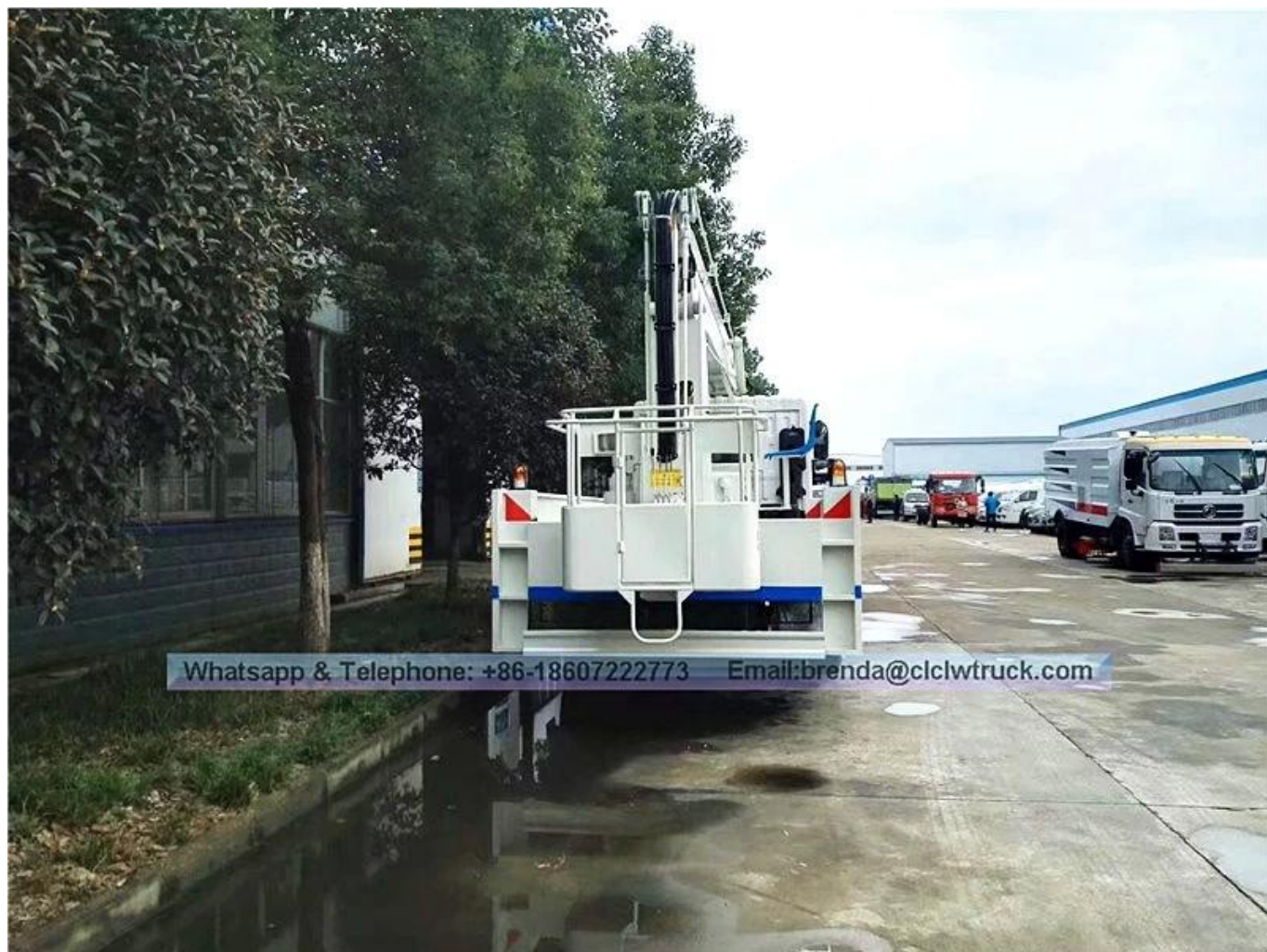


Whatsapp & Telephone: +86-18607222773 Email: [brenda@clclwtruck.com](mailto:brenda@clclwtruck.com)









Whatsapp & Telephone: +86-18607222773 Email: [brenda@clclwtruck.com](mailto:brenda@clclwtruck.com)