

# High-altitude Operation Truck

Main specifications			
Product model	name33-meter high-altitude work vehicle		
Gross vehicle weight(kg)	4495	Drive type	mechanical drive
Payload(kg)		Overall dimension (mm)	5998×2080×3300
Curb weight(Kg)	4365	cab seats (man)	2,3
Approach/departure angle (°)	20/15	Front/rear hang(mm)	1100/1798,1130/1768
Number of axles	2	Wheelbase(mm)	3360
Axle load(Kg)	1800/2695	Max speed(Km/h)	115
Chassis specifications			
Chassis model	BJ1045V9JBA-33	Manufacturer	FOTON
Brand name	FOTON brand	Overall dimension (mm)	5998×2080×3300
Fuel type	diesel	Emission standard	GB17691-2018
Engine model	Engine manufacturer	Displacement(ml)	Power(Kw)
Q25A-150E60	Quanchai Power Co., Ltd.	2496	110
High-altitude Operation Performance			
Max working height(mm)	3300		
Rated platform load (Kg)	200		
Effective lifting weight (Kg)	1000		
High-altitude Operation Truck Functions			
High-altitude operation truck is one kind of special purpose vehicle which transport the workers and tools to aerial work. Equipped operational device both on the working platform and rotary seat, It can be remote control engine start / stop, high / low speed. Using the electro-hydraulic proportional valve to control lifting arm is good stability. The lifting arm can 360 ° continuously rotate. Through the link mechanism to make job groove level, steerable emergency pump fell job groove when the main pump fails, with night lighting, can lift heavy objects. The outrigger can separate and adjustable, to achieve vehicle leveling on uneven road. It is widely used in electricity, street lighting, municipal, landscape, communications, airports, making (repair) ship, transportation, advertising, photography and other aerial work areas.			



Whatsapp & Telephone: +86-18607222773 Email: [brenda@clclwtruck.com](mailto:brenda@clclwtruck.com)



Whatsapp & Telephone: +86-18607222773 Email: [brenda@clclwtruck.com](mailto:brenda@clclwtruck.com)



Whatsapp & Telephone: +86-18607222773 Email: [brenda@clclwtruck.com](mailto:brenda@clclwtruck.com)



Whatsapp & Telephone: +86-18607222773 Email: [brenda@clclwtruck.com](mailto:brenda@clclwtruck.com)



Whatsapp & Telephone: +86-18607222773 Email: [brenda@clclwtruck.com](mailto:brenda@clclwtruck.com)



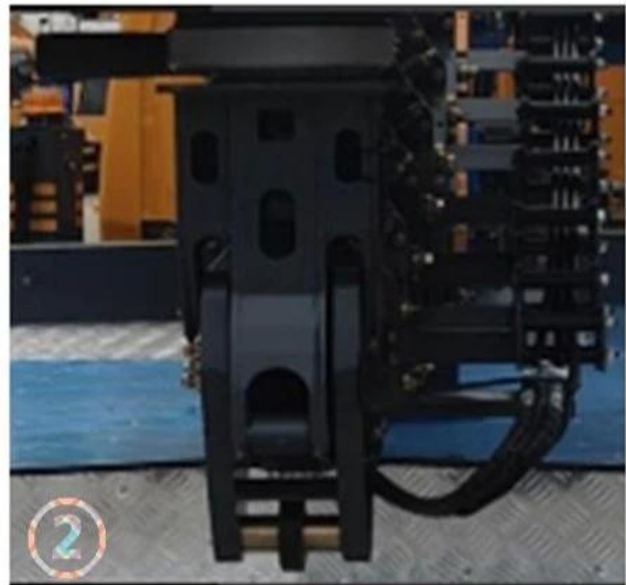
Whatsapp & Telephone: +86-18607222773 Email: [brenda@clclwtruck.com](mailto:brenda@clclwtruck.com)



Whatsapp & Telephone: +86-18607222773 Email: [brenda@clclwtruck.com](mailto:brenda@clclwtruck.com)



Whatsapp & Telephone: +86-18607222773 Email: [brenda@clclwtruck.com](mailto:brenda@clclwtruck.com)



Whatsapp & Telephone: +86-18607222773

Email: [brenda@clclwtruck.com](mailto:brenda@clclwtruck.com)

- . Balancing Valve: Ensures smooth and safe cylinder operation.
- . Slewing Mechanism: 21-inch vortex slewing drive with a trapezoidal base platform provides a larger load-bearing surface for enhanced stability.
- . Reel: Integrated triple-combo reel (hydraulic + electric + hose) offers convenient and practical utility.
- . Boom Head: Fork-like boom head design features two extra support points compared to traditional designs, minimizing operational clearance for smoother movement.
- . Dual Lifting Cylinders: Oversized and reinforced cylinders ensure smoother lifting. Equipped with burst valves for enhanced safety during elevated operations.
- . Proportional Valve: Renowned brand proportional valve precisely controls the oil supply for all upper-structure movements, enabling speed adjustment and smooth, steady movements.