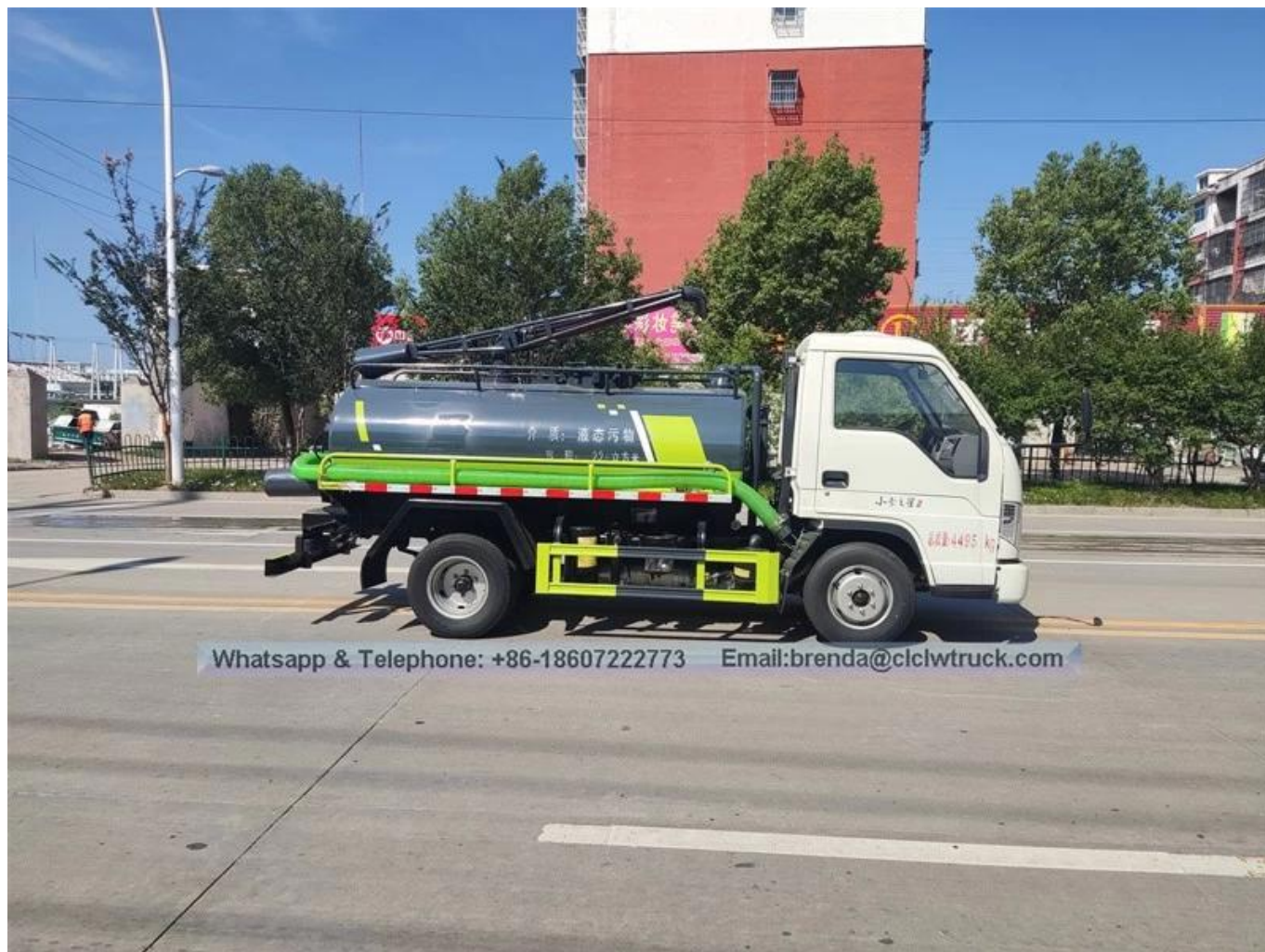


complete Vehicle Parameter	
ITEM	DESCRIPTION
Vehicle	FORLAND fecal suction truck
Overall dimensions (mm)	5385×1880×2350
Fecal tank (L)	3000
Gross Vehicle Weight (kg)	Appro × 5400
Net weight (kg)	Appro × 2870
Payload (kg)	Appro × 2400
Wheel base (mm)	2600
Max speed (Km/h)	90
Chassis Parameter	
Cabin	Single row cabin, no power steering,no air conditioner, 2 passengers, left hand drive.
Drive type	4×2
Engine	Brand : QuanChai Model : 4A2-68C50, 68hp Type : diesel, 4 cylinder. Displacement : 2270ml Emission standard : Euro 2
Transmission	5 forward,1 reverse, manual operated
Tire model	6.00-15
No.of tire	6pcs
Tanker Body Parameter	
Characteristic	<ol style="list-style-type: none"> 1. Carbon steel septic tank,thickness 4mm. 2. Septic tank volume 3m3. 3. Equipped with PTO,vacuum pump. 4. Equipped with oil water separator, overflow valve. 5. Equipped with looking sewage window, self flow exit. 6. Equipped with hand washing device. 7. Equipped with a suction pipe 5m.
Performance	<ul style="list-style-type: none"> - Time to full suction sewage tank: ≤5min. - Suction depth : ≥8m. - Septic truck can suck sewage, sludge, mud, stones, bricks and other large objects.

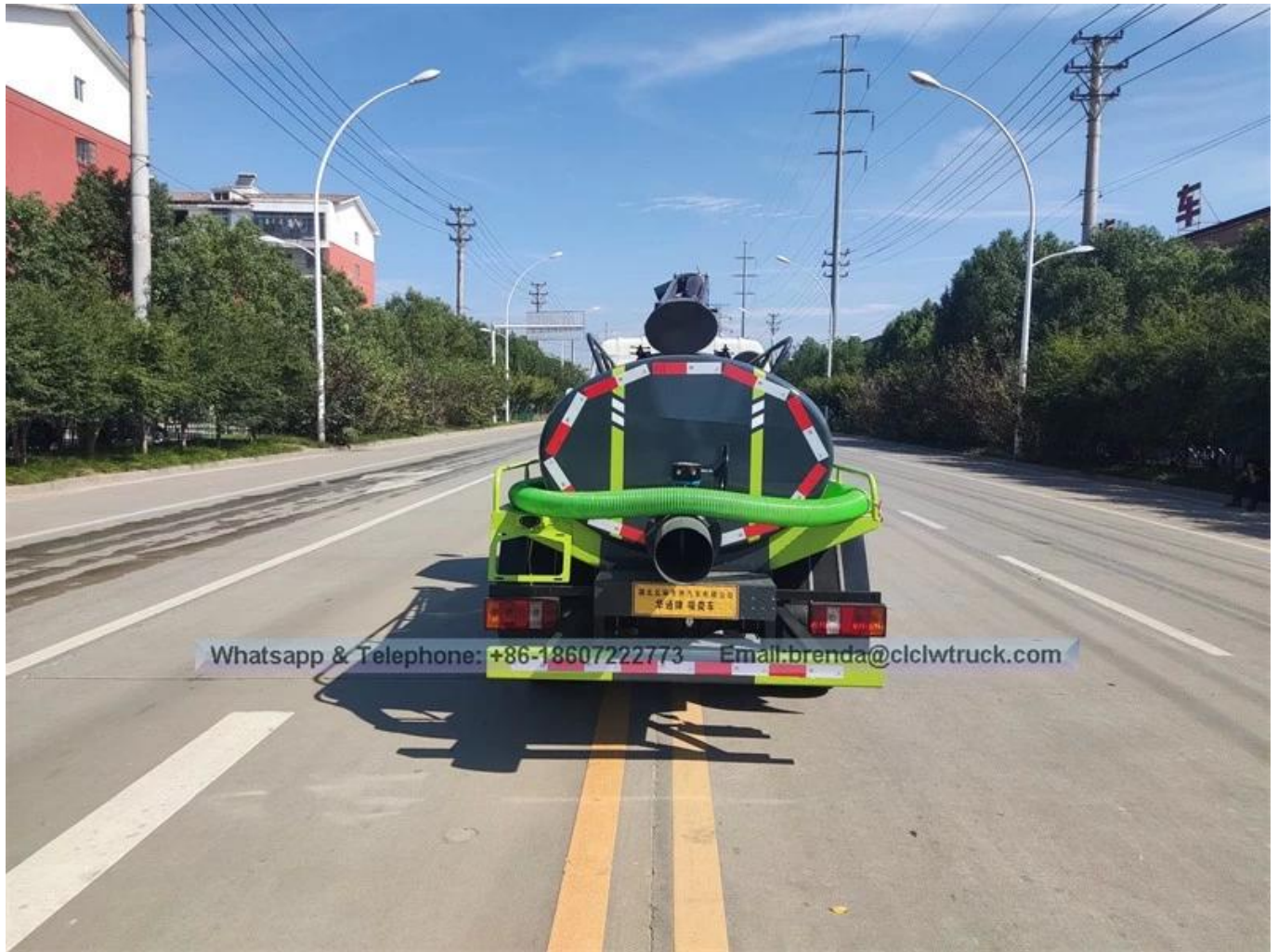
Image as below:



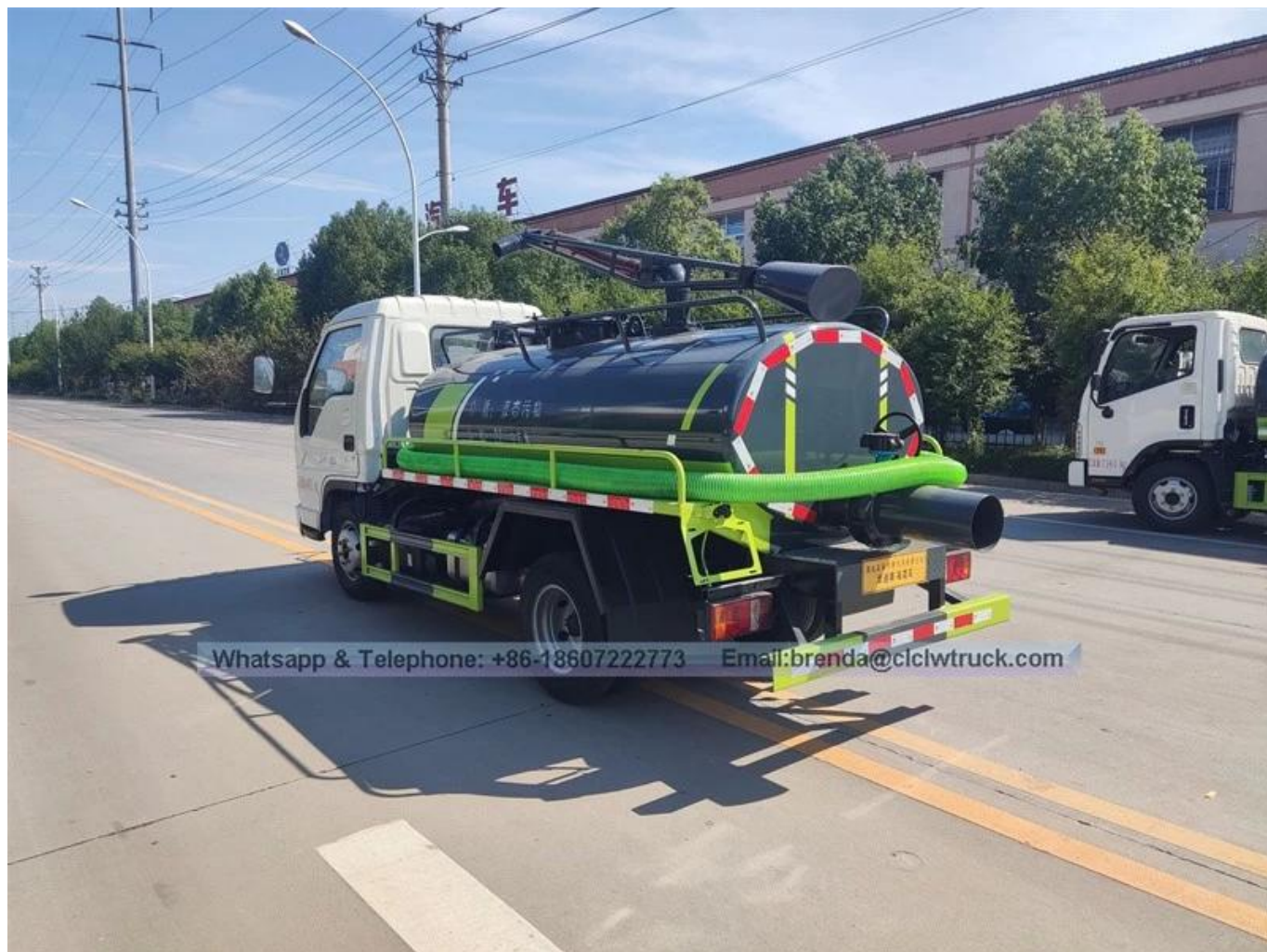


Whatsapp & Telephone: +86-18607222773 Email: brenda@clclwtruck.com





Whatsapp & Telephone: +86-18607222773 Email: brenda@clclwtruck.com







Whatsapp & Telephone: +86-18607222773 Email: brenda@clclwtruck.com