

Main specification			
Product model	JDF5060XLCQ4 Refrigerator Truck		
Gross weight(Kg)	6600	Drive type	4x2
Payload(Kg)	3570	Overall dimension(mm)	6200x2000x2900
Curb weight(Kg)	2900	Cab seats	2
Approach/departure angle(°)	24/14	Front/rear hang(mm)	1015/1825
Axle No.	2	Wheelbase(mm)	3360
Axle load(Kg)	2330/4270	Max speed(Km/h)	105
Chassis specification			
Chassis model	QL1070BUHAY	Manufacturer	Qingling Auto Co.,Ltd
Brand name	ISUZU	Dimension(mm)	5900x1880x2160
Tyre specification	7.00R16 14PR	Tyre No.	6
Steel spring number	8/6+5	Front track base(mm)	1504
Fuel type	Diesel	Rear track base(mm)	1425
Emission standard	Euro 6	Transmission	5 forward gear,1 reverse gear
Cab	Single row, power steering,air-condition, USB and a radio		
Engine model	Engine manufacturer	Displacement(ml)	Power(Kw)
4KH1CN6LB	Qingling ISUZU Engine Co.,Ltd	2999	88(120hp)
Performance			
Van body size(mm)	4350x1800x1800	Load capacity(TON)	3
Lowest refrigeration temperature(°C)	-5 to -18 Centigrade		
Feature and Application			
The refrigerator truck is the closed van truck that is used to transport the frozen or fresh goods. This truck is made up of vehicle chassis, Polyurethane insulation van, refrigeration unit and temperature recorder. It is commonly used to transport the frozen food, dairy products, vegetable and fruit and vaccine medicine etc. For the special requirements of trucks,such as the meat transportation, the meat hook, aluminum alloy guide rail and ventilation slots etc. parts can be chosen and installed.			

Refrigerator truck

image as below



Whatsapp & Telephone: +86-18607222773 Email: brenda@ciclwtruck.com

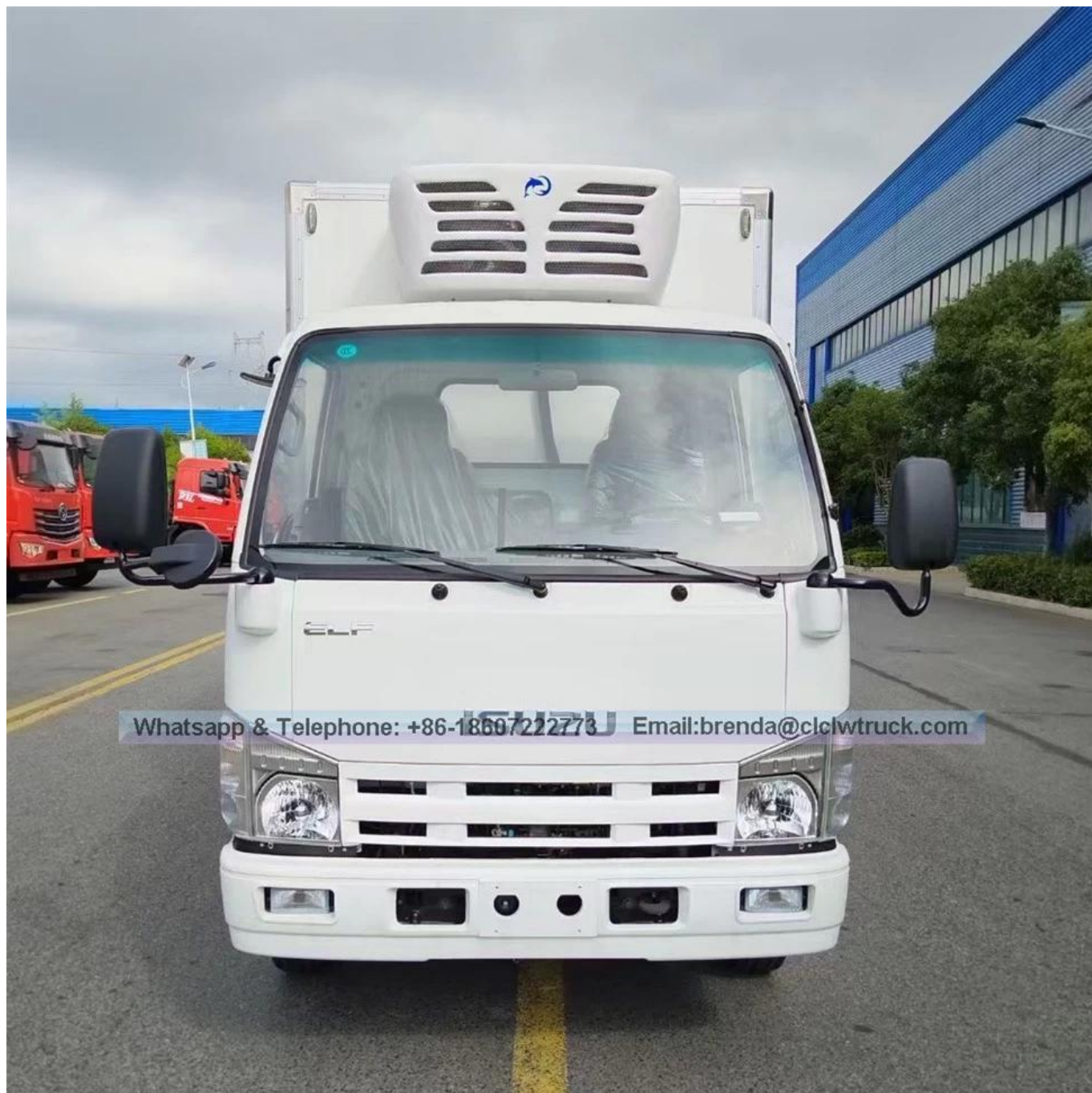




Whatsapp & Telephone: +86-18607222773 Email: brenda@clclwtruck.com



Whatsapp & Telephone: +86-18607222773 Email: brenda@ciclwtruck.com



Whatsapp & Telephone: +86-18607222773 Email: brenda@clclwtruck.com



Whatsapp & Telephone: +86-18607222773 Email: brenda@ciclwtruck.com





Whatsapp & Telephone: +86-18607222773 Email: brenda@clclwtruck.com



Whatsapp & Telephone: +86-18607222773 Email: brenda@ciclwtruck.com



Choice what you need



Standard(clean)



Guide rail of bottom Aluminum steel of bottom



Ventilating slot(bottom)



304 Stainless skin



Ventilating slot(side)



Groove ventilating shot



Guide rail of meat hook



Goods shelf



Separate box



Mobile sparate hard board



Mobile sparate soft board

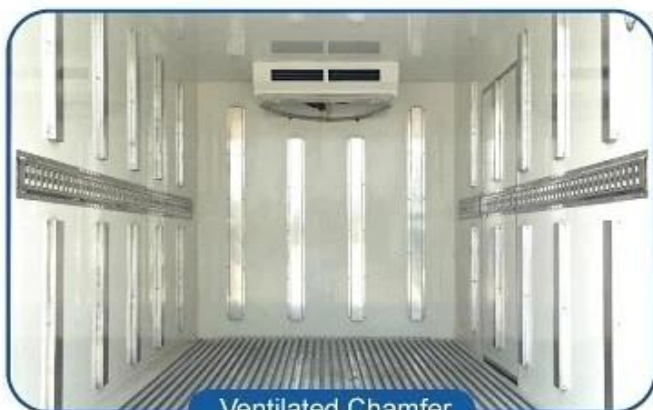
Optional Spare Parts



Meat Hanging Hooks



Side Door



Ventilated Chamfer



Rhombus figured aluminium plate

OUR CERTIFICATE



COMPANY PROFILE

Chengli Special Automobile Co., LTD is a big manufacturer of special trucks with well-equipped facilities and strong technical force, located in Suizhou City, Hubei Province, China.

At the end of 2015, the company's total assets attained RMB 2 billion, annual production value reached 100 thousand units. Within just 10 years, Chengli from a name without the propagation of local private enterprise has developed into a famous private-owned enterprise group with employs more than 8000 people and area of more than 2000 acres. Complying with different quality standards, Chengli has successively passed ISO9001 Certification, ISO 14001 Certification, OHSAS18001 Certification, CCC Certification, ASME Certification and ADR Certification.

Our products are widely used in municipal virescence, environmental sanitation, petrochemical industry and pressure vessel. It has registered trademark "CHENGLIWEI" abbreviated to CLW. Our factory cooperates with famous chassis manufacturers, such as DONGFENG, FAW, SINOTRUK, ISUZU, FOTON, JAC, JMC and etc.

[Read More +](#)

