

Main specifications			
Product model,name	ZZ1167M4617C Asphalt Distributor truck		
Gross weight(Kg)	16000	Drive type	4 X 2
Payload(Kg)	4800	Overall dimension(mm)	8985×2500×3320
Curb weight(Kg)	11070	Cab seats(man)	3
Approach/departure angle(°)	16/9	Front/rear hang(mm)	1500/2885
Number of axles	2	Wheelbase(mm)	4600
Axle load(Kg)	6000/10000	Max speed(Km/h)	90
Chassis specifications			
Chassis model	ZZ1167M4617C	Manufacture	Sinotruk group jinan truck co., LTD
Brand name	HOWO	Overall dimension(mm)	7990×2496×2958
Tire specification	11.00-20	Tires No.	6
Steel spring number	10/9+6	Front track(mm)	2022,2041
Fuel type	Diesel	Rear track(mm)	1830
Emission standard	Euro III	Transmission	6 forward gear,1 reverse gear
Cabin	Luxury interior and Instrument bar, with air conditioning and sleeper.		
Engine model	Engine manufacture	Displacement(ml)	Power(kw)
WD615.92	China national heavy duty truck group co., LTD	9726	196
The whole machine performance parameters			
Tank volume[m³]	10	The volume of asphalt spreader(L/m²)	0.2~3.5
Spraying width(mm)	6000mm	Working speed(Km/h)	1.5-7
Spraying error	±1.5%	The number of nozzles and control	48 set~one for one~
Heating method	Italy imports of diesel burner heating (200,000 kcal / h)		
Spray medium	Heat hot asphalt, modified asphalt, diluted asphalt, emulsified asphalt		
The equipment use and simple introduction			
ZZ1167M4617C type asphalt distributor is a kind of professional distributing emulsified asphalt, heat diluted asphalt, asphalt, high viscosity modified asphalt such as intelligent automation high-tech products. Used in the construction of high-grade highway asphalt pavement at the bottom of the transparent layer of oil spill cloth, waterproof layer, bonding layer. The asphalt made of the automobile chassis, asphalt tank, asphalt pump and spraying system, heat conduction oil heating system, hydraulic system, combustion system and control system, pneumatic system, operating platform. It is easy to operate, in the absorption of similar products at home and abroad on the basis of the technology, increased to ensure the construction quality and technical content and highlight the construction condition, construction environment improvement of humanized design. Its design is reasonable and reliable to ensure the asphalt distributing uniformity, computer control is stable and reliable, vehicle technical performance has reached the world advanced level.The vehicle can improve through my company all aspects of the work in worse conditions			
The equipment performance and characteristics			

- 1). This truck was adopted the HOWO luxury'chassis, Flexible and lightweight maneuverability, beautiful atmosphere appearance, for the majority of intercity logistics customers with safe, efficient and reliable service;
- 2). According to the spray volume and required working width, the computer can be any form of determinant nozzle combination;
- 3). Both of Manual and automatic control method, which can be implemented individually that each nozzle is controlled in order to adjust to achieve a spray width.
- 4). Controlling asphalt spreaders can not only be completed in the cab and also be controlled on the rear platform;
- 5). Can measure the speed of the car and the car's automatic control system based on the input amount of spill cloth and the width of spraying and asphalt type automatic calculation of asphalt pump revolution thus to adjust the asphalt pump pump automatically by the system.
- 6). Its heating system adopted the imported the Ital' burner with automatic ignition and temperature control function;
- 7). Adopt international advanced imported high viscosity bitumen pump, the asphalt can be pumped into the external tank, to achieve "self-absorption" and also be asphalt tank pump out;
- 8). A key of the machine parts (eg hydraulic CBQ550-L, hydraulic motors 05-110-BD31, asphalt pump QGB950, proportional valve EFBG-03-160-HF, automatic control system CLW-48-01, speed sensors, etc.) all adopted the internat renowned components, so can ensure the reliability of the machine, improve service life;
- 9). In under the premise of guarantee does not interfere with other parts maintenance disassembly, decorated with all parts of a ladder and handrail, convenient operation
- 10). All external heat pipe all have the thermal insulation layers, while reducing the amount of heat to avoid scalding the operator;
- 11). The Vehicular rapid heating system (10-15 °C / h), can improve the heating efficiency and reduce the auxiliary time of construction, so ensure the distributing temperature;
- 12). Asphalt spraying pole adopts three sections of folding structure, move up and down by distributing stem can realize double or multiple spraying, by moving around distributing bar can expand the scope of cloth, and can effectively avoid obstacles;
- 13). Manual spraying function can make asphalt by hand spraying nozzle, flexible, convenient and applicable to small and marginal construction condition.The ace spray gun.Open the total valve, open transfer valve, open the oil return valve, the use of oil return valve to adjust the pressure of the spray gun.
- 14). The Sspphalt tank with internal sewage sedimentation tank, and fitted with level monitor and alarm, safety devices;
- 15). Flush nozzle this feature can be add nozzle residual asphalt by diesel high pressure air blow out, prevent asphalt to freeze in the nozzle, can greatly improve the service life of the nozzle.Shut off the main valve, oil return valve, open the pneumatic valve, open the suction valve open nozzle can in turn
- 16). Good thermal insulation layer can ensure static heat preservation performance index, 12 °C / 8 hours or less, and the anticorrosion and durable;
- 17). The truck of outer packing is made of stainless steel plate, anti-corrosion and durable, beautiful and easy

HOWO 12cbm Asphalt Distributor truck

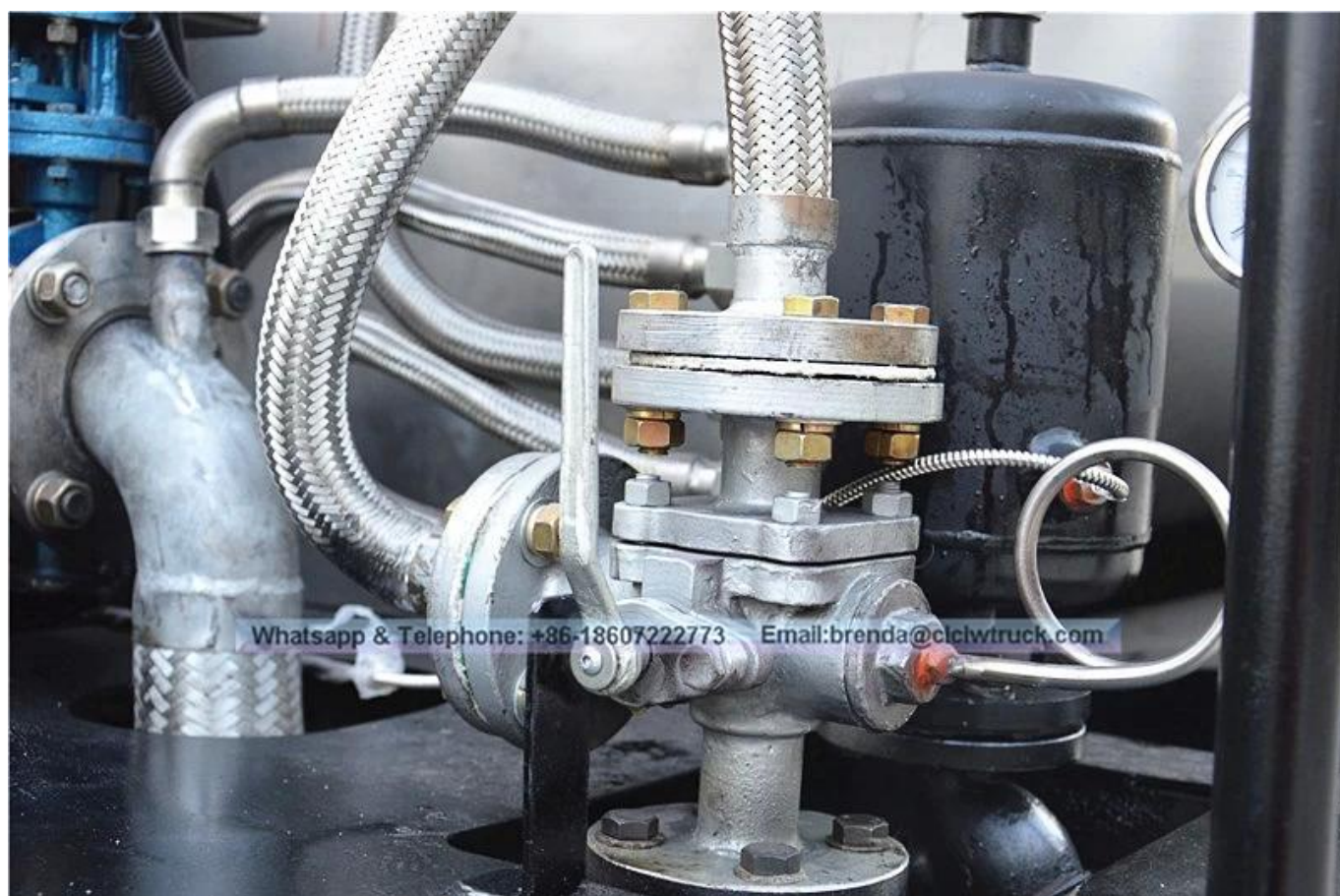
Image as below:



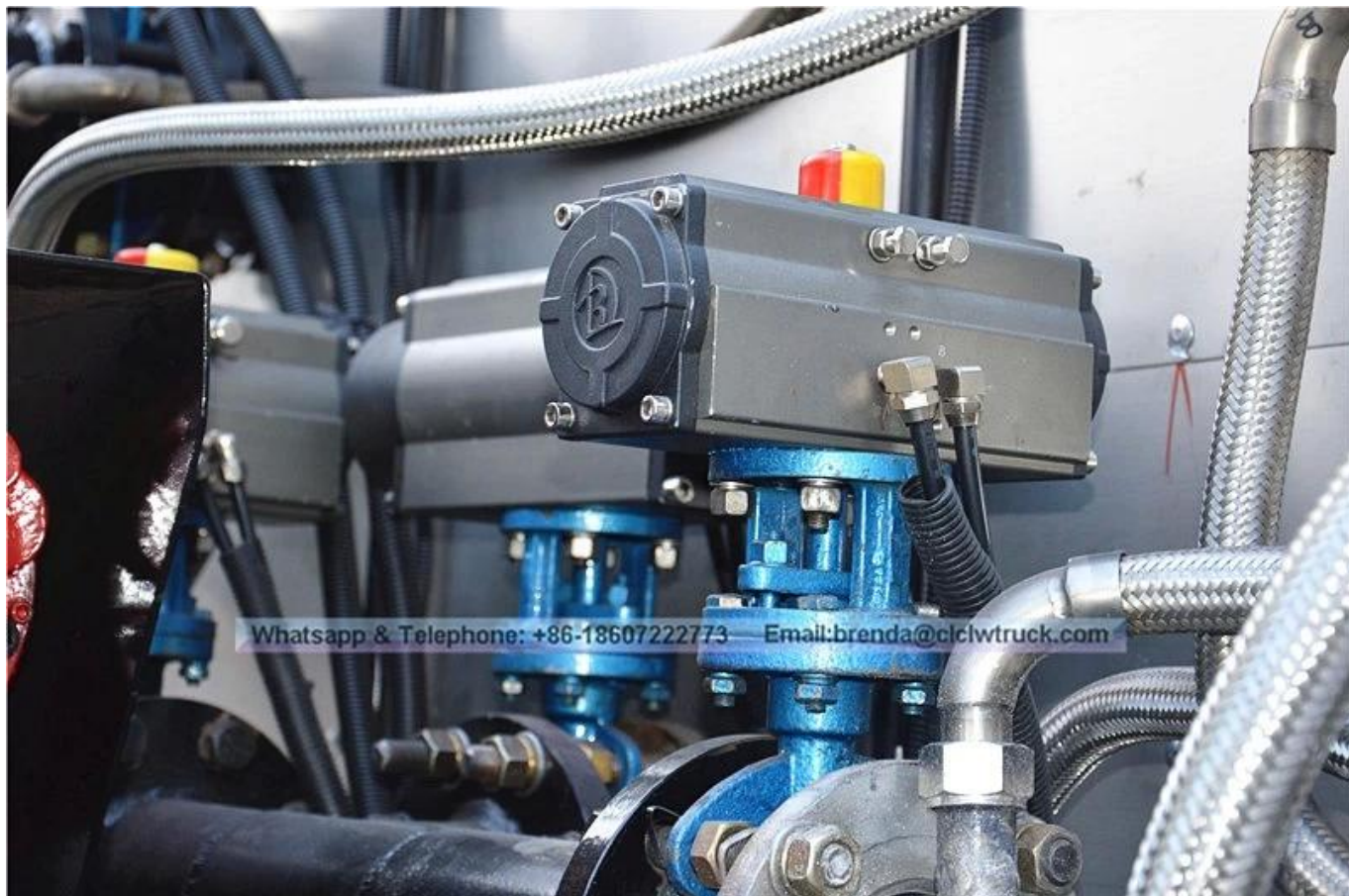




Whatsapp & Telephone: +86-18607222773 Email: brenda@clclwtruck.com



Whatsapp & Telephone: +86-18607222773 Email: brenda@clclwtruck.com



Whatsapp & Telephone: +86-18607222773 Email: brenda@ciclwtruck.com